

Task 6: Environment and Energy – Holistic Site Characterization, Habitat and Land Use Mapping and Data/Wildlife Management Plan

**PI: Dr. Natalie Kruse, Jennifer Bowman,
and Robert Wiley**



HOLISTIC SITE CHARACTERIZATION, HABITAT AND LAND USE MAPPING AND DATA/WILDLIFE MANAGEMENT PLAN

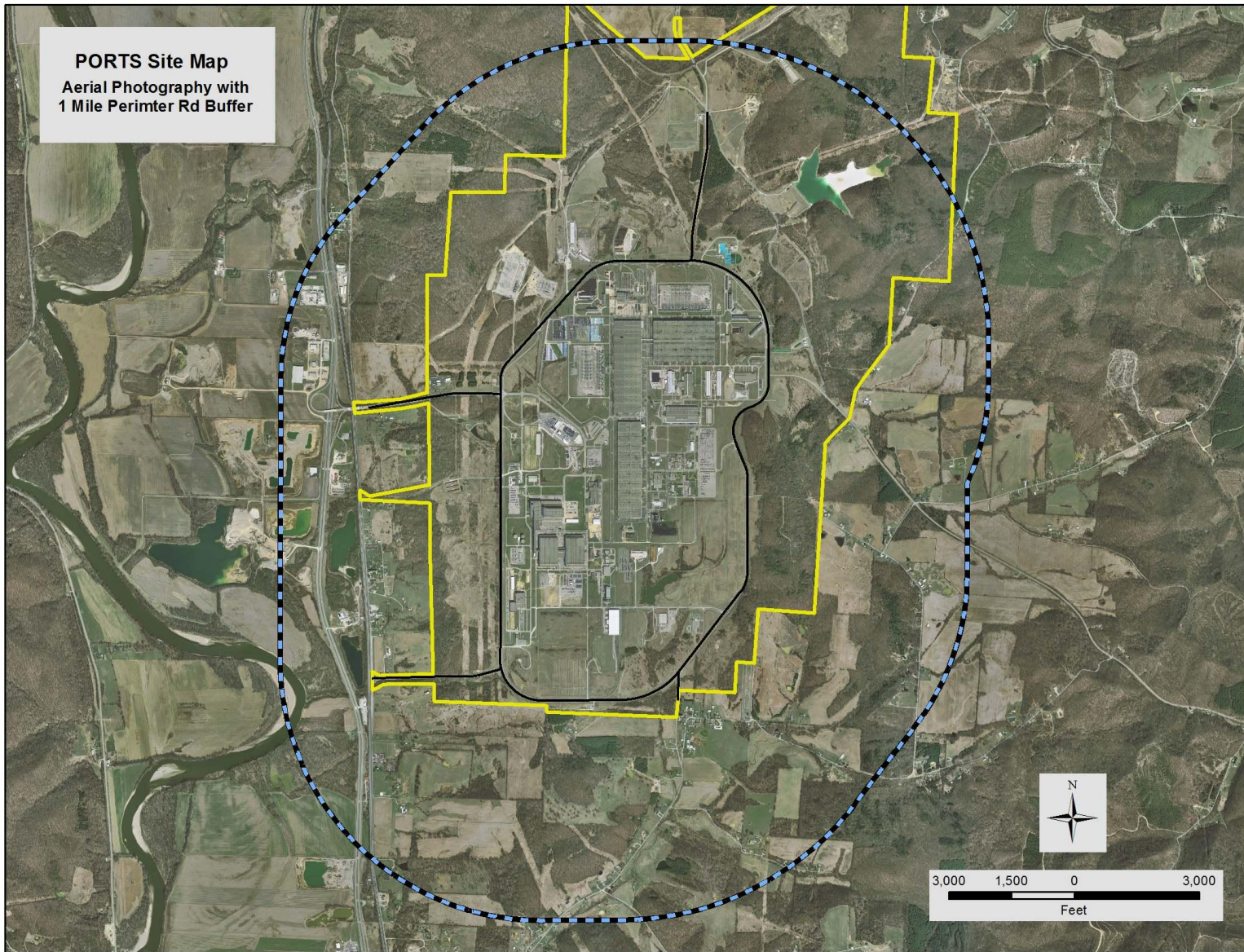
**PORTS
FUTURE**



Overview of Task

- Site-wide land use mapping
- Habitat classification and mapping outside of fence
- Management plan for deer on site based on habitat data

PORTS Site Map
Aerial Photography with
1 Mile Perimeter Rd Buffer



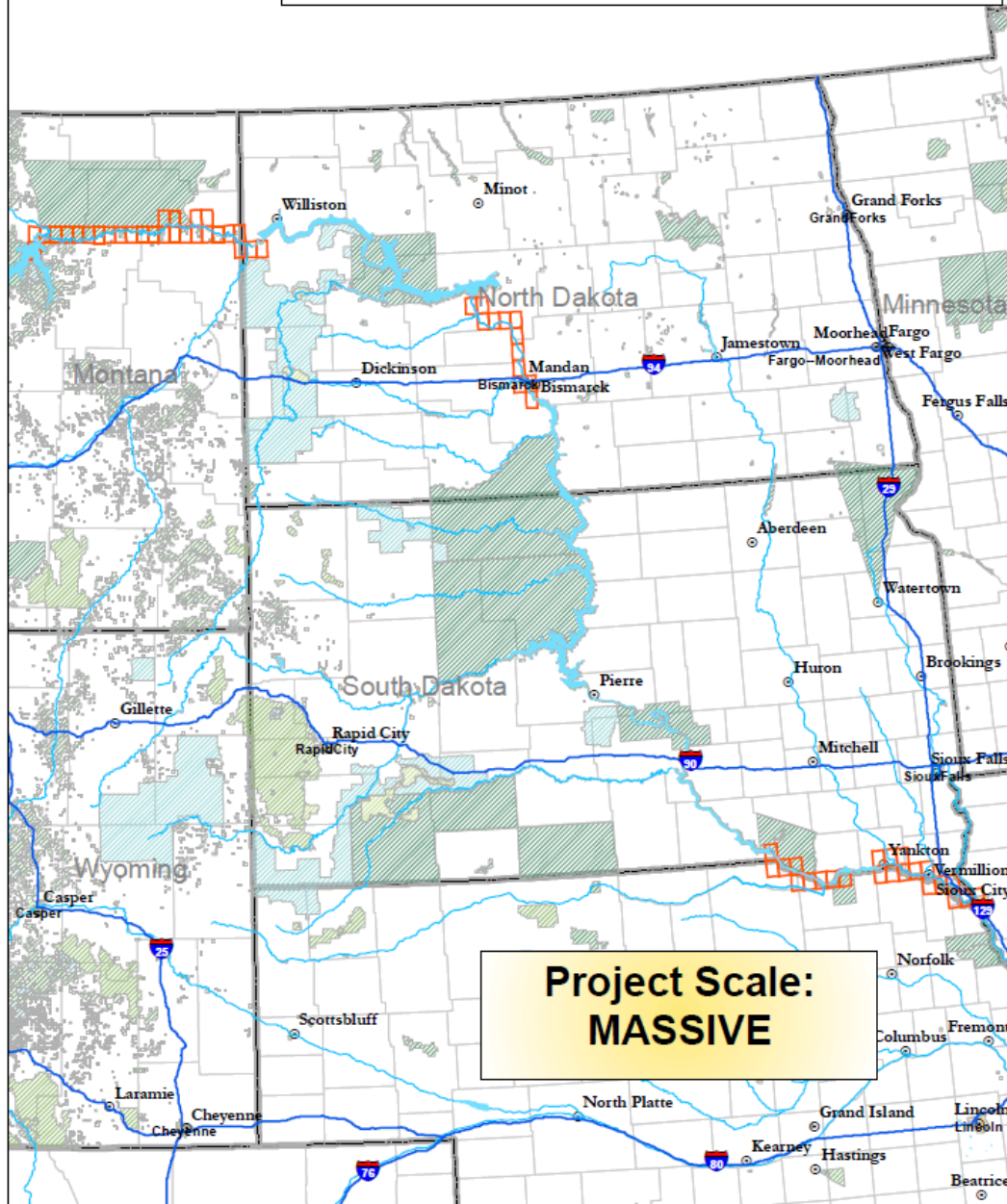
**PORTS
FUTURE**



Relevant Work Experience

- Missouri River
- Wildlife and Habitat Mapping and Analysis
- Sandbar Area Change with Rising Sea Level

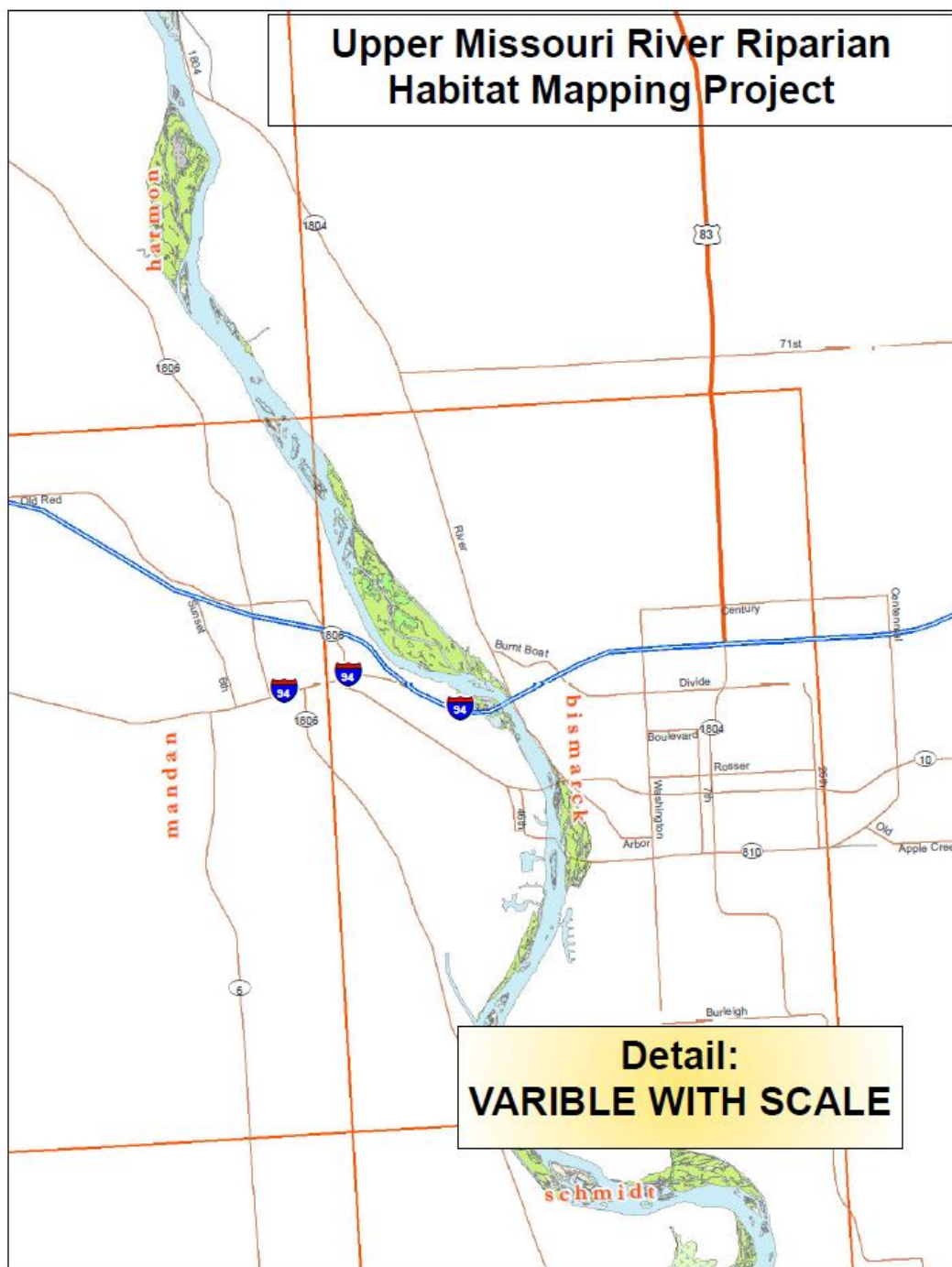
Upper Missouri River Riparian Habitat Mapping Project



**PORTS
FUTURE**



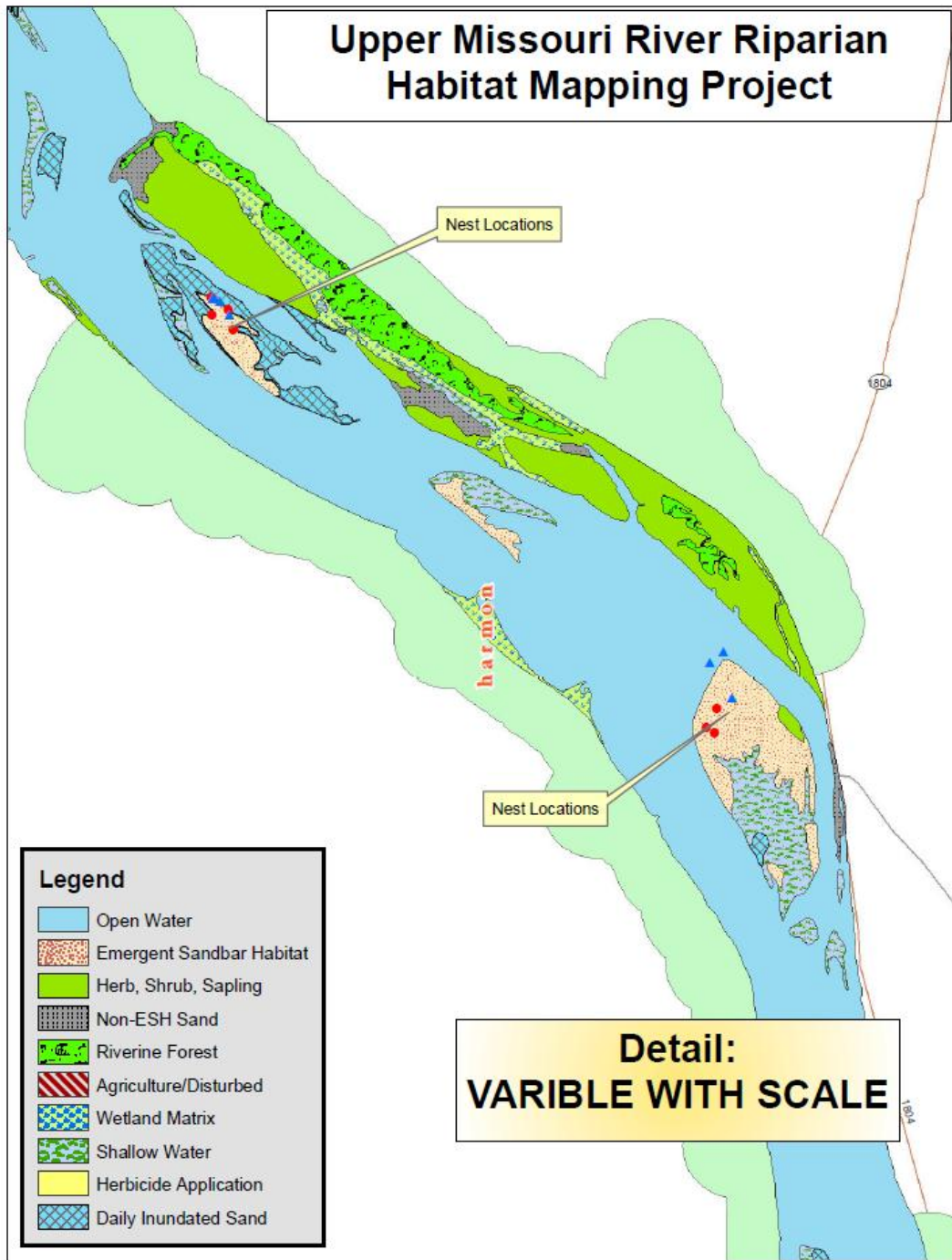
Upper Missouri River Riparian Habitat Mapping Project



**PORTS
FUTURE**



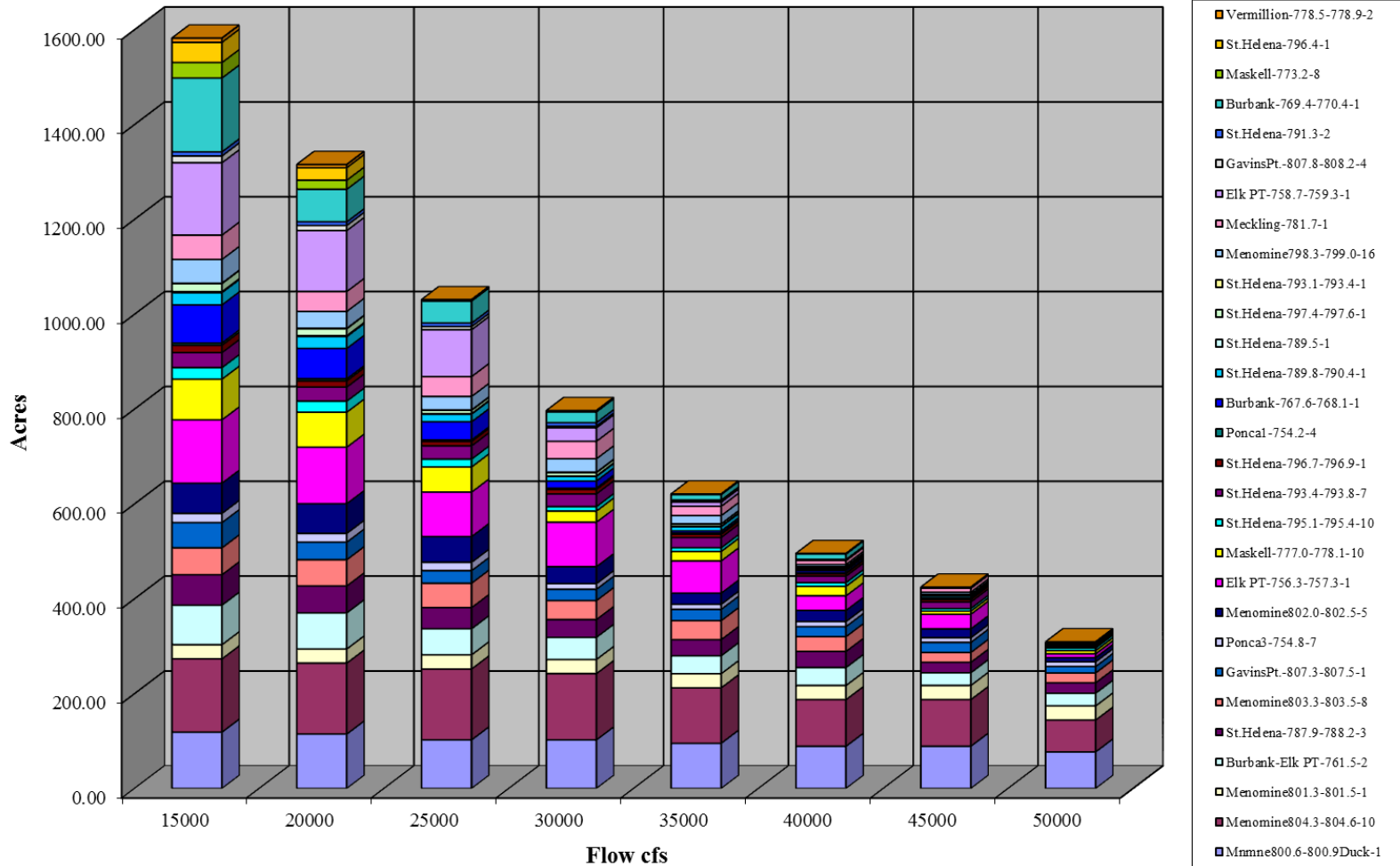
Upper Missouri River Riparian Habitat Mapping Project



**PORTS
FUTURE**



Total Sandbar Area at Change Stage for Islands that Supported Nesting in 2005-06



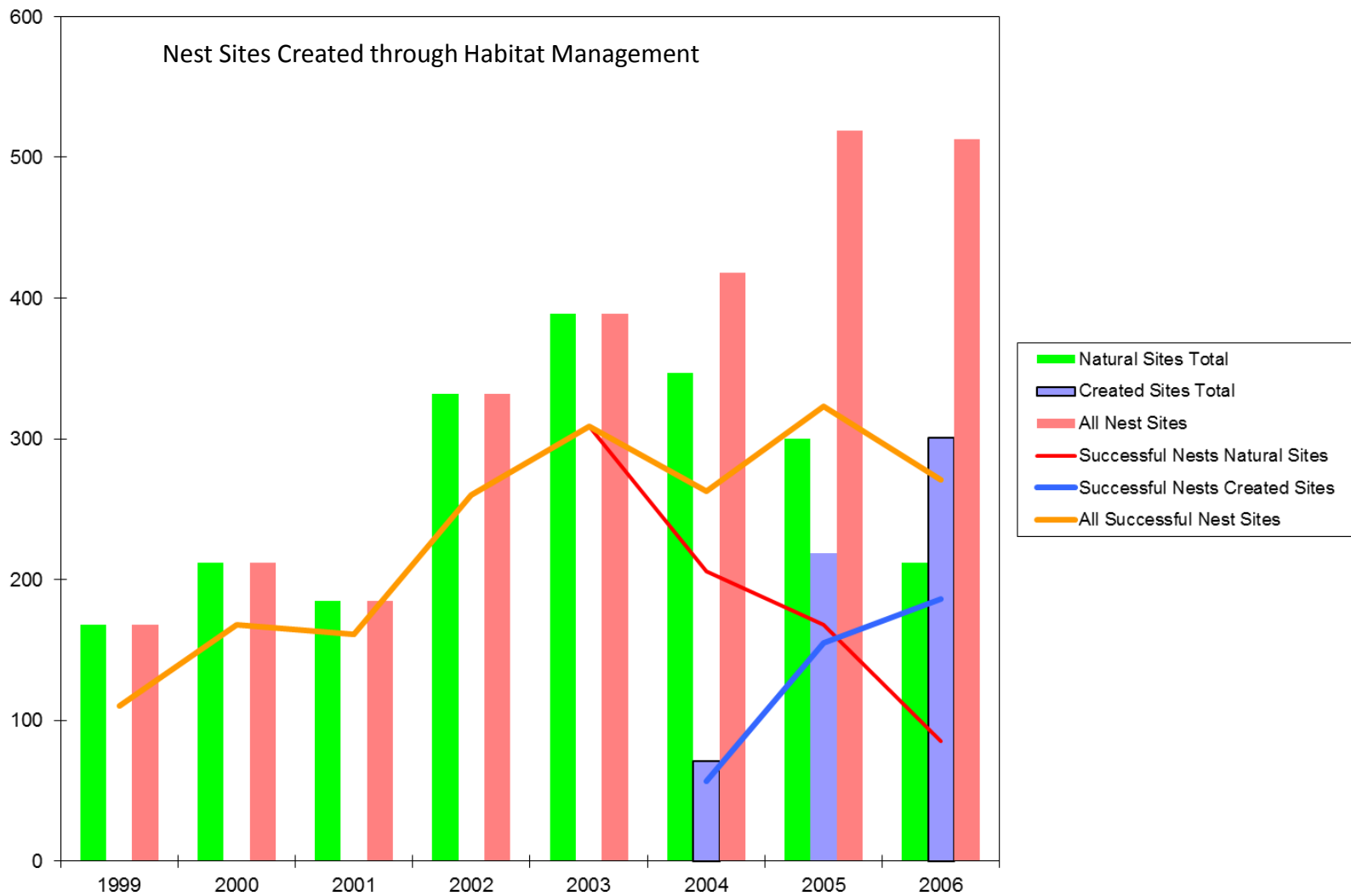
MRPlants DB-final2005 [Read-Only] [Compatibility Mode] - Microsoft Excel

Missouri River Plants Database													
	A	B	C	D	E	F	G	H	I	J	K	L	
1	Missouri River Plants Database		Total Species	165	Relative Importance								
2	CODE	Scientific Name	Common Name	Wetland Status	Nativity	Weed	Life Form	Habit	Garrus	Ft. Randall	Garrison	Ft. Peck	
15	AMFR	Amorpha fruticosa L.	False Indigo	2	1	3	10	2	4	4	5	1	
16	ANGE	Andropogon gerardii Vitman	Big Bluestem	4	1	2	6	2	3	3	3	3	
17	ANCA	Anemone canadensis L.	Canadian Anemone	2	1	0	5	2	1	1	2	0	
18	ANNE	Antennaria neglecta L.	Field Pussy-toes	6	1	0	7	2	2	2	2	1	
19	APCA	Apocynum cannabinum L.	Indian-hemp	3	1	2	5	2	3	3	3	3	
20	ARAN	Argentina anserina (L.) Rydb.	Silverweed	1.5	1	0	6	2	4	4	4	3	
21	ARLO	Aristida longiseta Steud.	Threawn	5	1	0	7	2	1	1	1	1	
22	ARLU	Artemisia ludoviciana Nutt.	White Sage	6	1	2	10	2	2	2	3	2	
23	ASEN	Asclepias incarnata L.	Swamp Milkweed	1	1	2	5	2	3	3	3	2	
24	ASSY	Asclepias syriaca L.	Common Milkweed	6	1	2	5	2	2	2	3	3	
25	ASVE	Asclepias verticillata L.	Whorled Milkweed	4	1	2	5	2	1	1	2	0	
26	ASER	Aster ericoides L.	White Prairie Aster	4	1	0	5	2	2	2	2	0	
27	BESY	Beckmannia syzigachne (Steud.) Fern.	American Sloughgrass	1	1	0	4	1	2	2	2	2	
28	BOCU	Bouteloua curtipendula (Michx.) Torr.	Sideoats Grama	5	1	0	6	2	2	2	3	1	
29	BRAR	Bromus arvensis L.	Field Brome	6	4	2	6	1	0	0	2	2	
30	BRIN	Bromus inermis L.	Smooth Brome	4	3	2	6	2	3	3	3	1	
31	BRMO	Bromus mollis L.	Soft Brome	5	4	3	6	1	2	2	2	1	
32	BRTE	Bromus tectorum L.	Downy Brome	5	4	3	6	1	3	3	3	2	
33	BUDA	Buchloe dactyloides (Nutt.) Engelm.	Buffalograss	5	1	0	6	2	2	2	3	1	
34	CASA1	Cannibis sativa L.	Hemp	5	2	3	5	2	1	1	0	0	
35	CACA3	Cabomba caroliniana Gray	Carolina Fanwort	1	4	3	2	1	0	0	0	2	
36	CAST3	Calamagrostis stricta (Timm) Koel ssp. Inexpansa (G)	Northern Reedgrass	2	1	0	6	2	2	2	1	1	
37	CALO	Calamovilfa longifolia (Hook.) Scribn.	Prairie Sandreed	6	1	0	6	2	2	2	2	2	
38	CASE	Calystegia sepium (L.) R. Br.	Hedge False Bindweed	3	4	2	7	2	3	4	4	2	
39	CAVU	Carex vulpinoidea Michx.	Fox Sedge	2	1	0	4	2	2	2	0	0	
40	CHFA	Chamaecrista nictitans (L.) Moench	Partridge Pea	4	2	1	5	2	4	4	4	2	
41	CHRU	Chenopodium rubrum L.	Red Goosefoot	1	1	0	5	1	3	3	3	3	
42	CIMA	Cicuta maculata L.	Spotted Water Hemlock	1	1	4	5	2	3	3	3	2	
43	CIAR	Cirsium arvense (L.) Scop.	Canada Thistle	4	4	3	5	2	4	4	4	3	
44	CLLI	Clematis ligusticifolia Nutt.	Western Virgin's-bower	4	1	0	7	2	1	1	2	0	
45	COCA	Conyza canadensis	Horseweed	4	1	2	5	2	4	4	3	4	
46	COAM	Conispermum americanum (Nutt.) Nutt. Var. rydbergii	American Bugseed	4	2	1	5	1	4	0	0	0	
47	COST	Cornus sericea L.	Red-osier Dogwood	2	1	0	11	2	2	2	4	3	
48	CRGL	Croton glandulosus L.	Croton	6	1	2	5	1	3	2	3	0	
49	CYAT	Cycloloma atriplicifolia (Spreng.) Coult.	Winged Pigweed	3	1	3	5	1	4	4	4	3	
50	CYRI	Cyperus rivularis Kunth	Slender Flatsedge	2	1	2	4	1	3	2	1	0	
51	CYST	Cyperus strigosus L.	Straw-colored Flatsedge	2	1	2	4	2	2	3	3	2	
52	DYGL	Dactylis glomerata L.	Orchardgrass	5	3	0	6	2	2	2	2	2	
53	DAPU	Dalea purpurea Vent.	Purple prairieclover	4	1	0	5	2	1	1	0	0	
54	DEIL	Desmanthus illinoensis (Michx.) MacM. Ex B.L. Robt	Prairie Bundleflower	4	1	0	5	2	1	1	0	0	

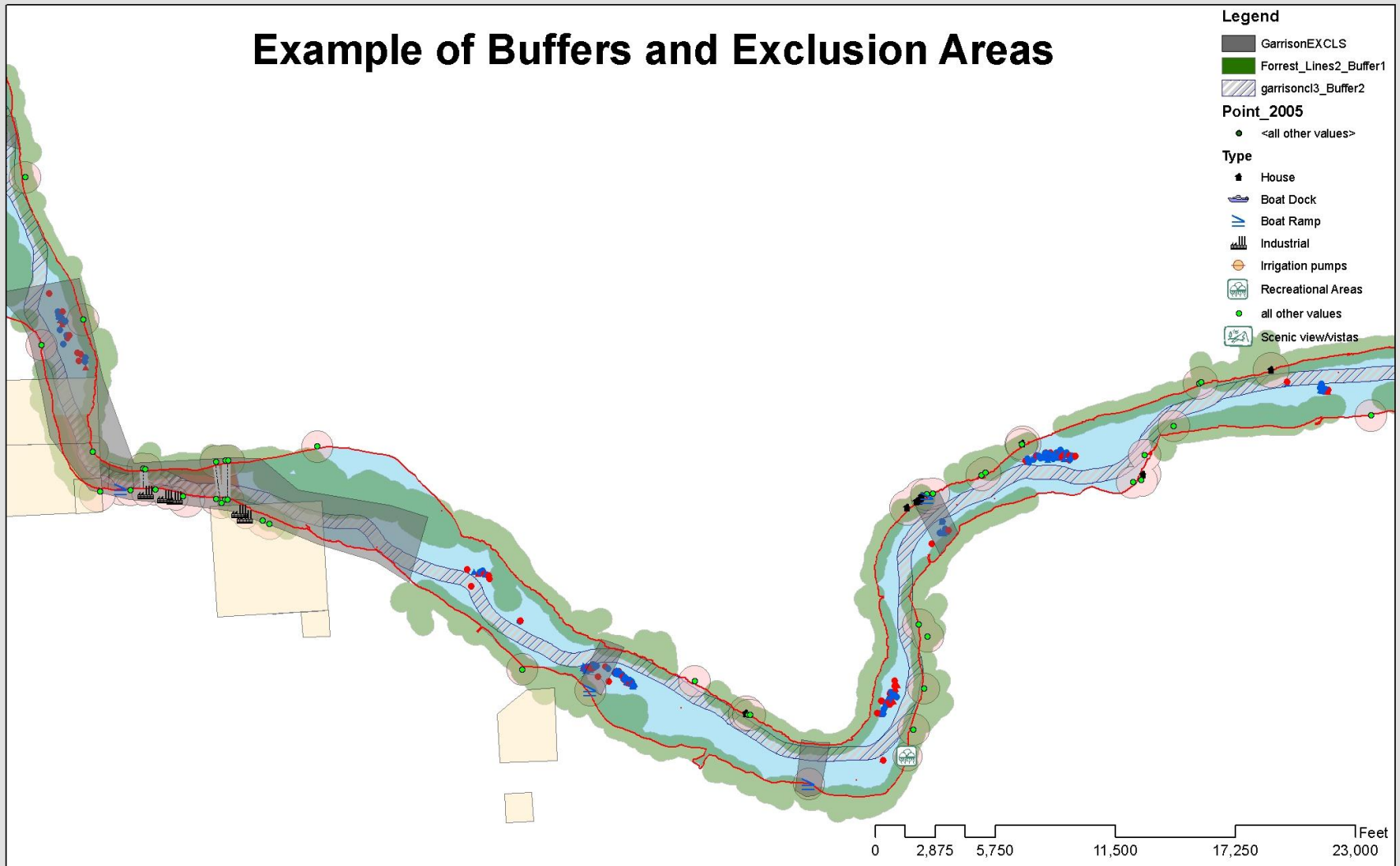
Ready | 100%

PORTS FUTURE





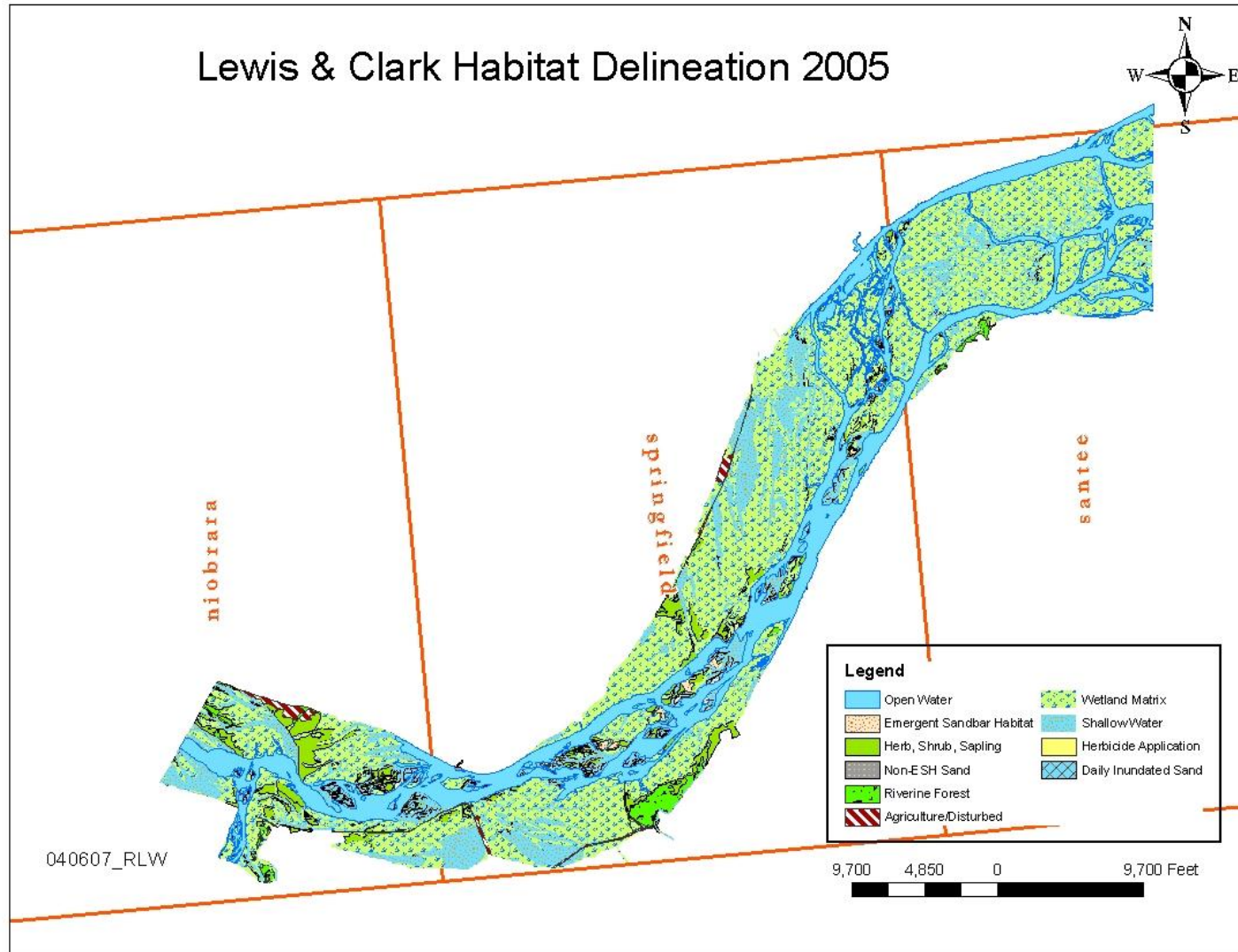
Example of Buffers and Exclusion Areas



**PORTS
FUTURE**



Lewis & Clark Habitat Delineation 2005



**PORTS
FUTURE**

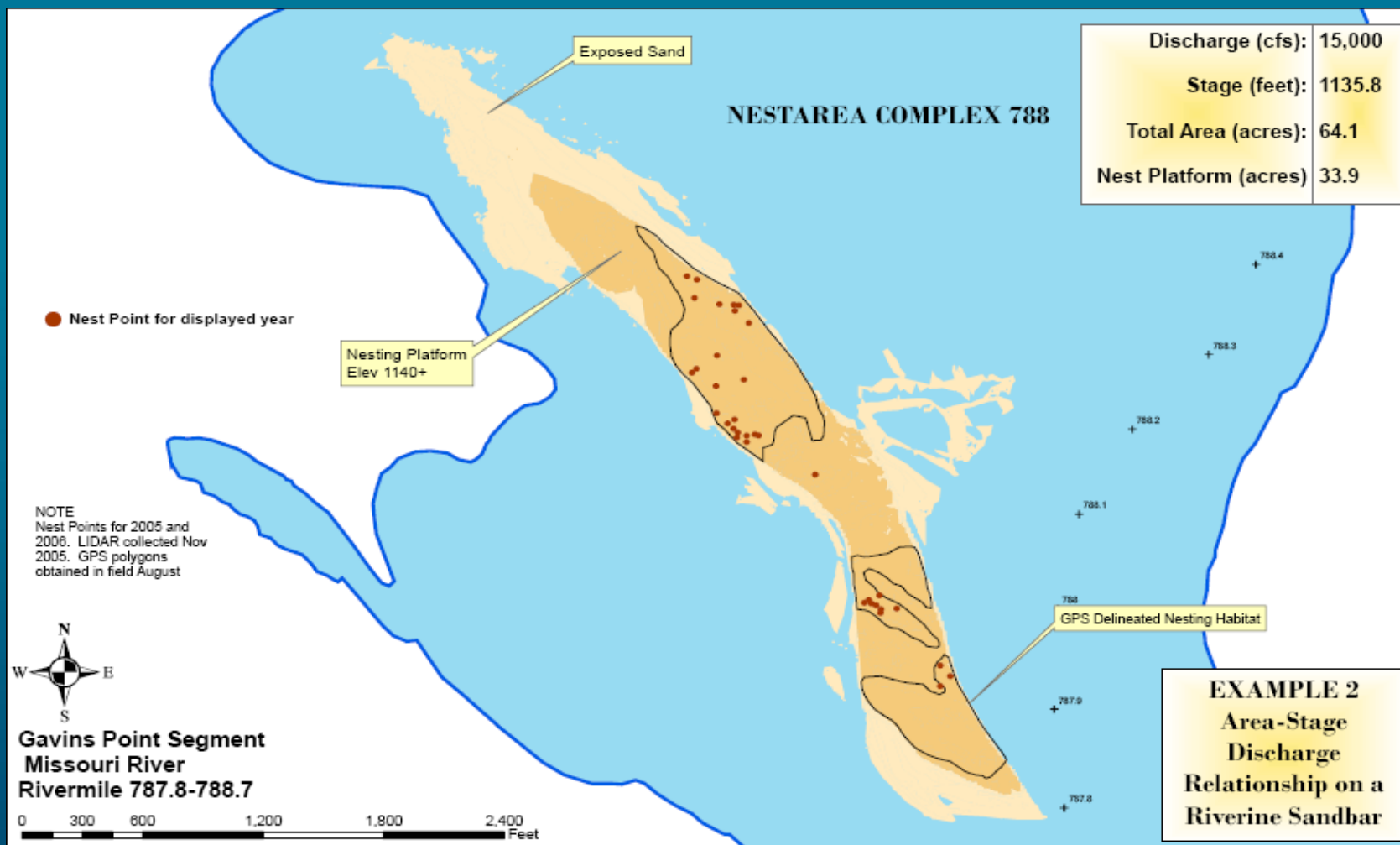


CHANGE IN SANDBAR ISLAND AREA AND NESTING HABITAT WITH STAGE CHANGE

Missouri River Gavins Point Segment Rivermile 788, 2005
and 2006 Dataset

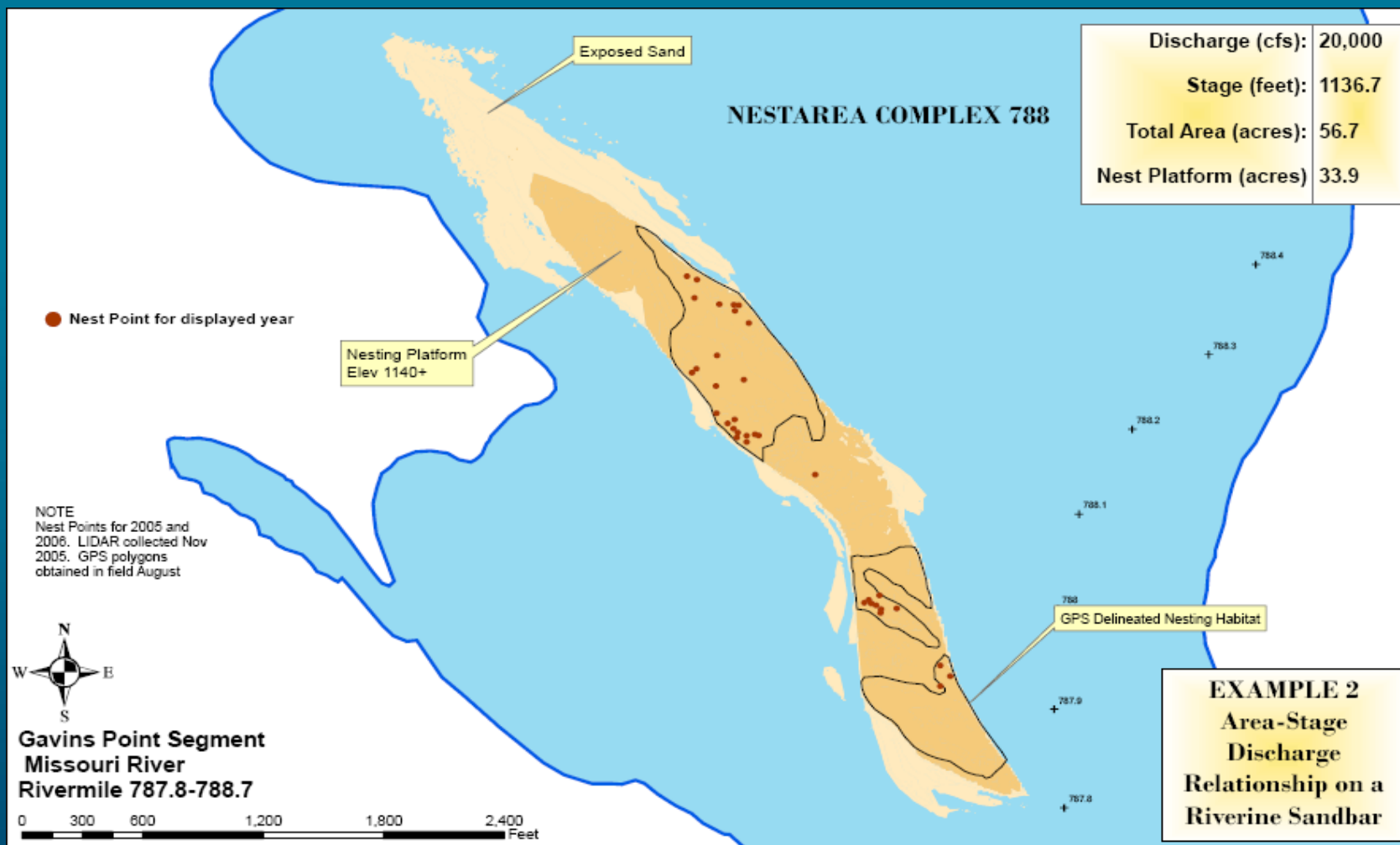
**PORTS
FUTURE**





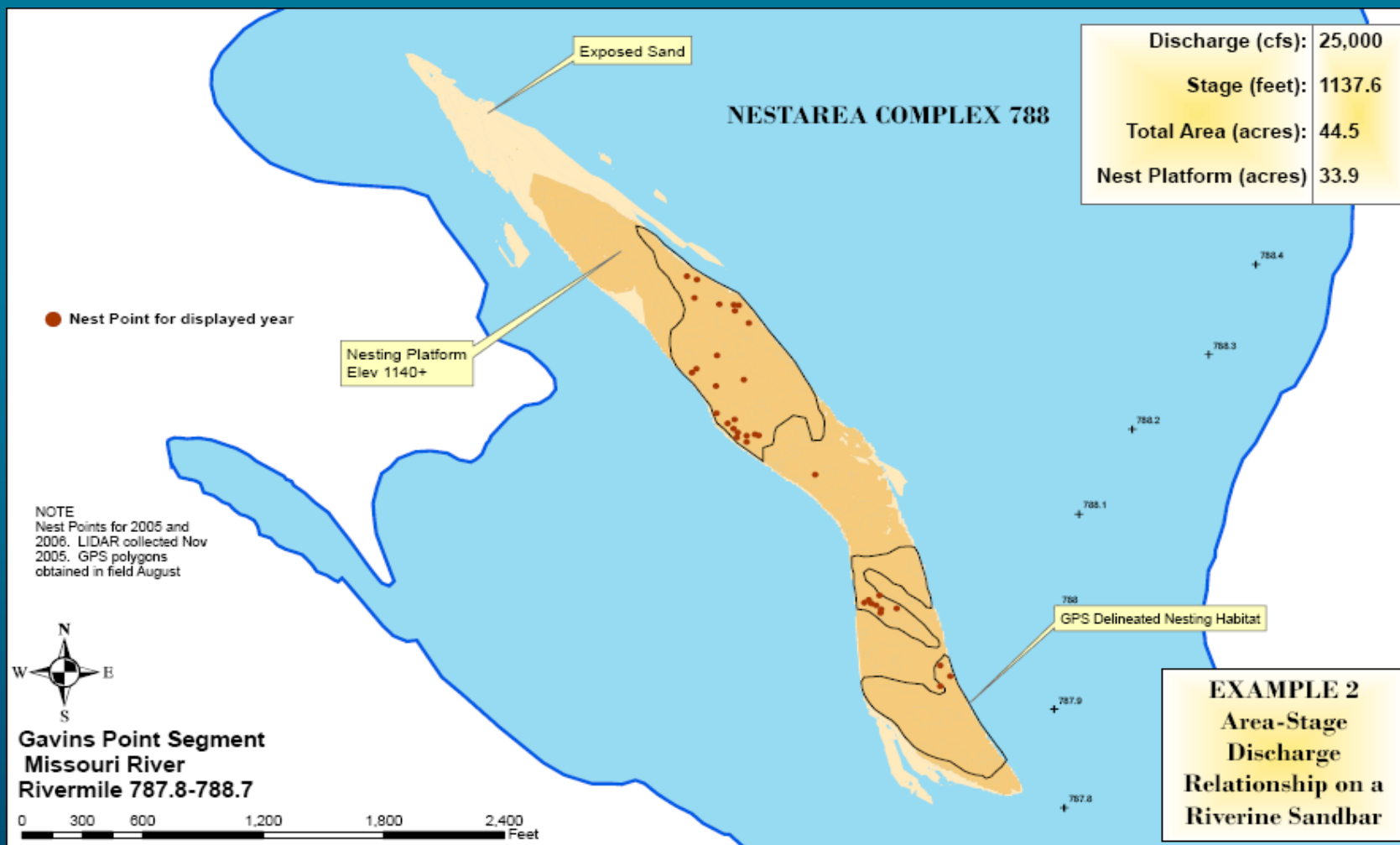
**PORTS
FUTURE**





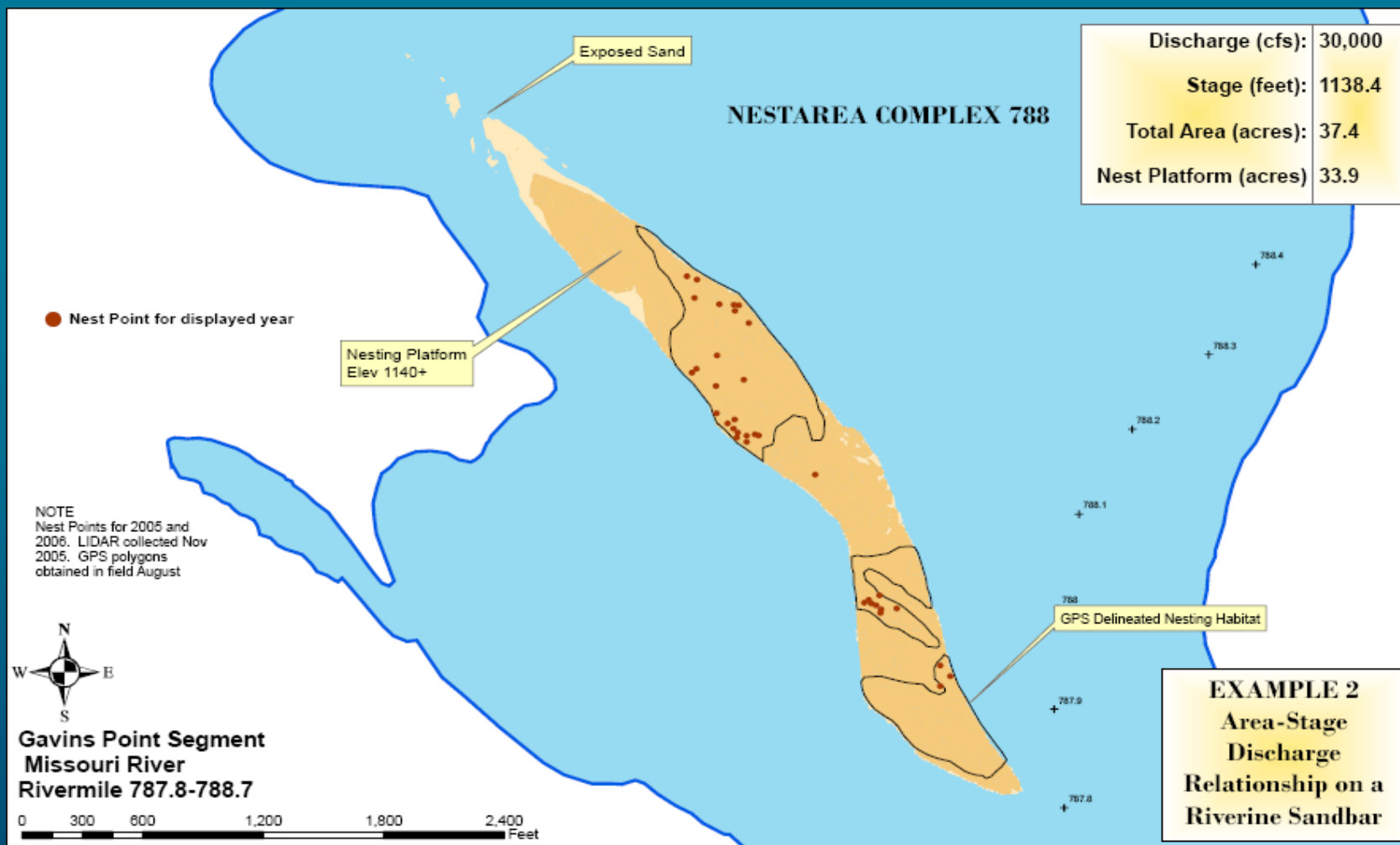
**PORTS
FUTURE**





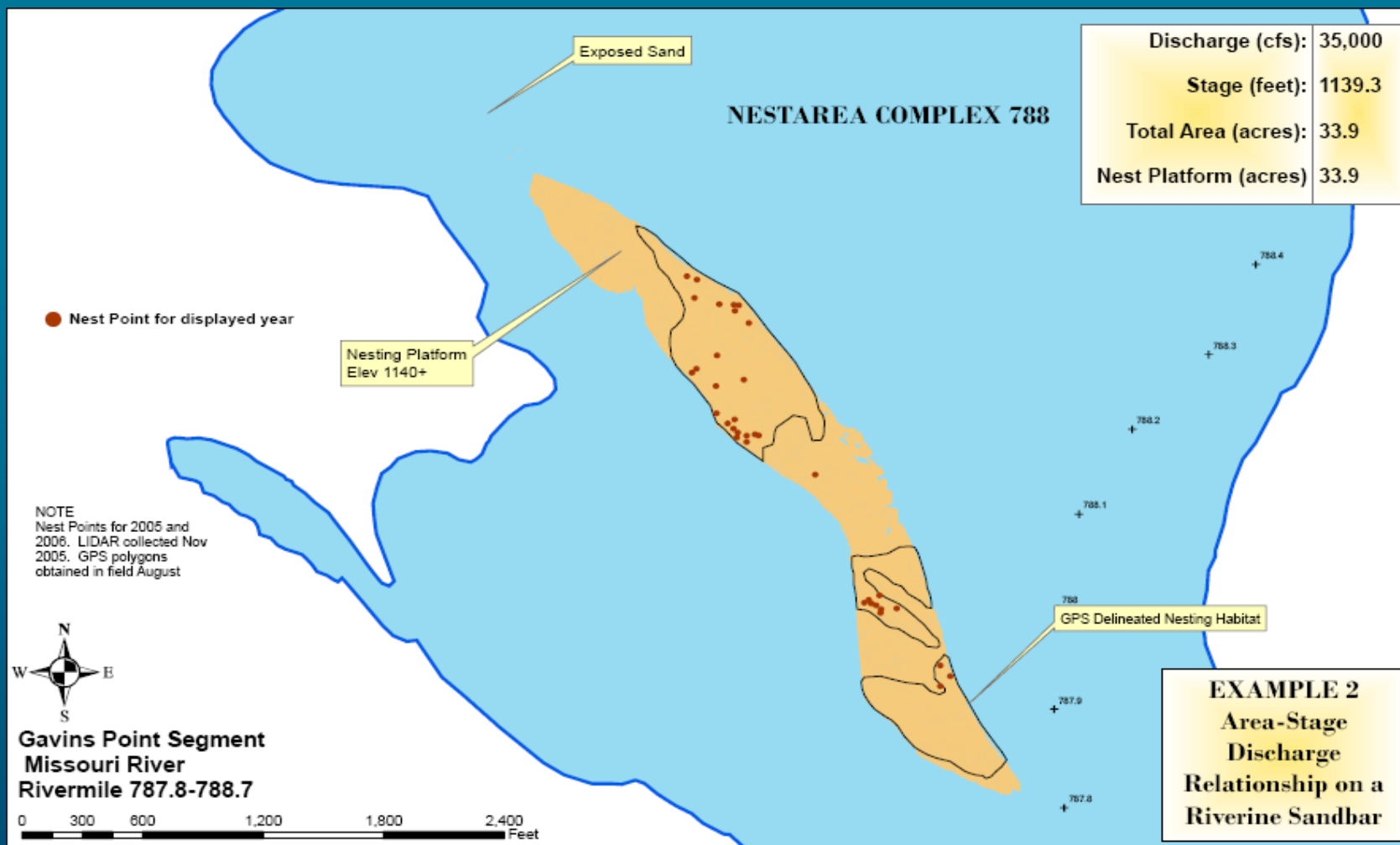
**PORTS
FUTURE**





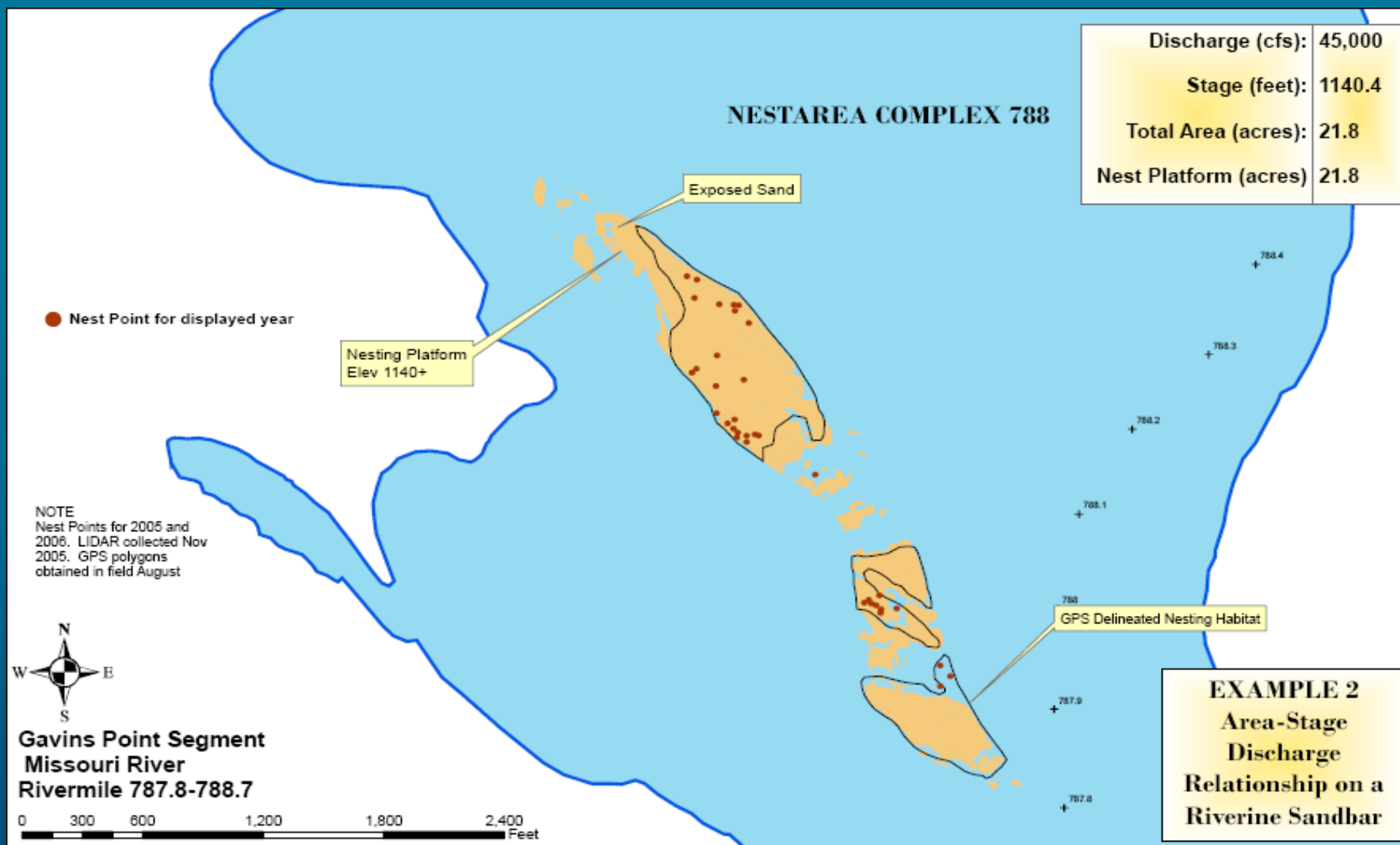
**PORTS
FUTURE**





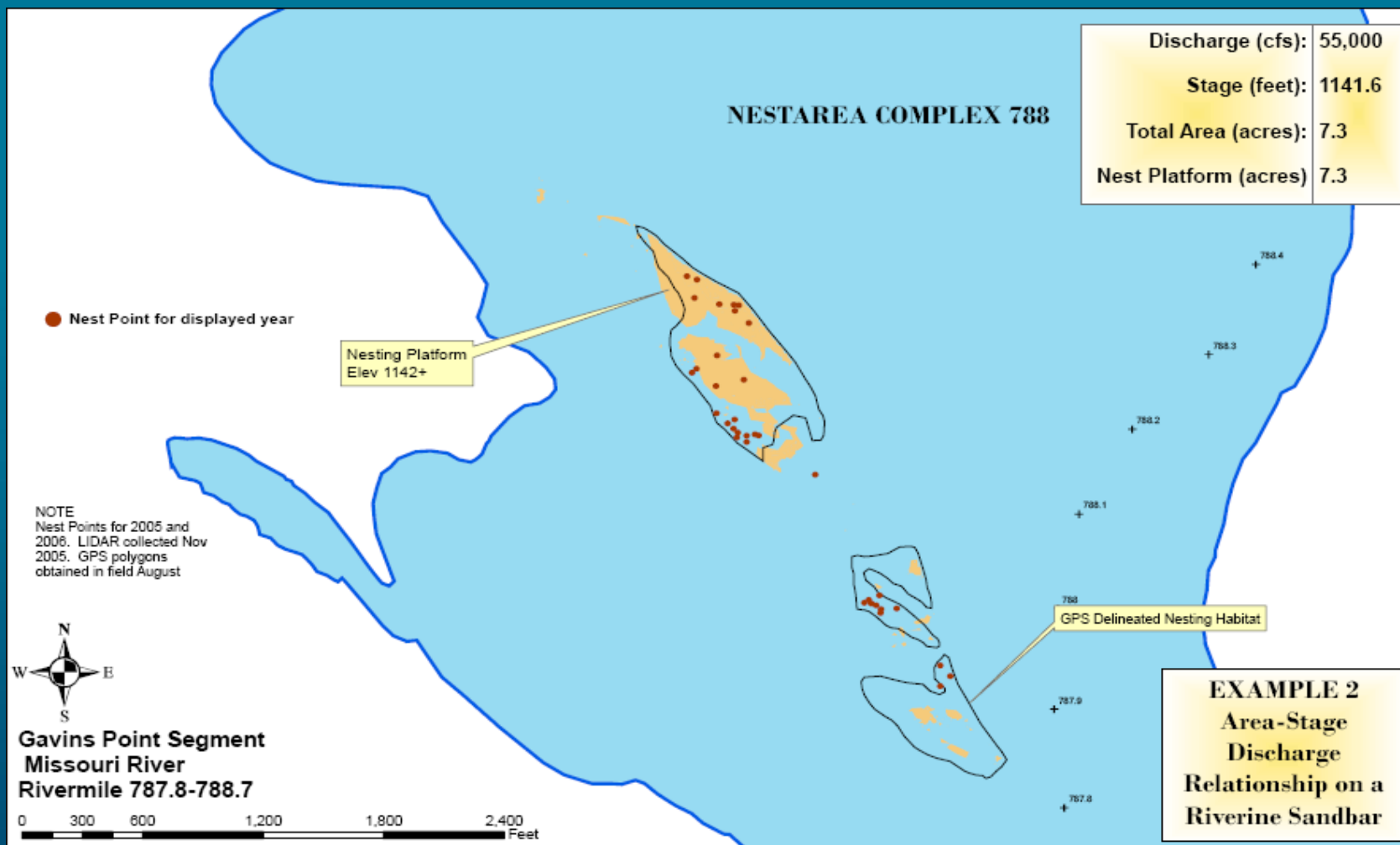
**PORTS
FUTURE**





**PORTS
FUTURE**

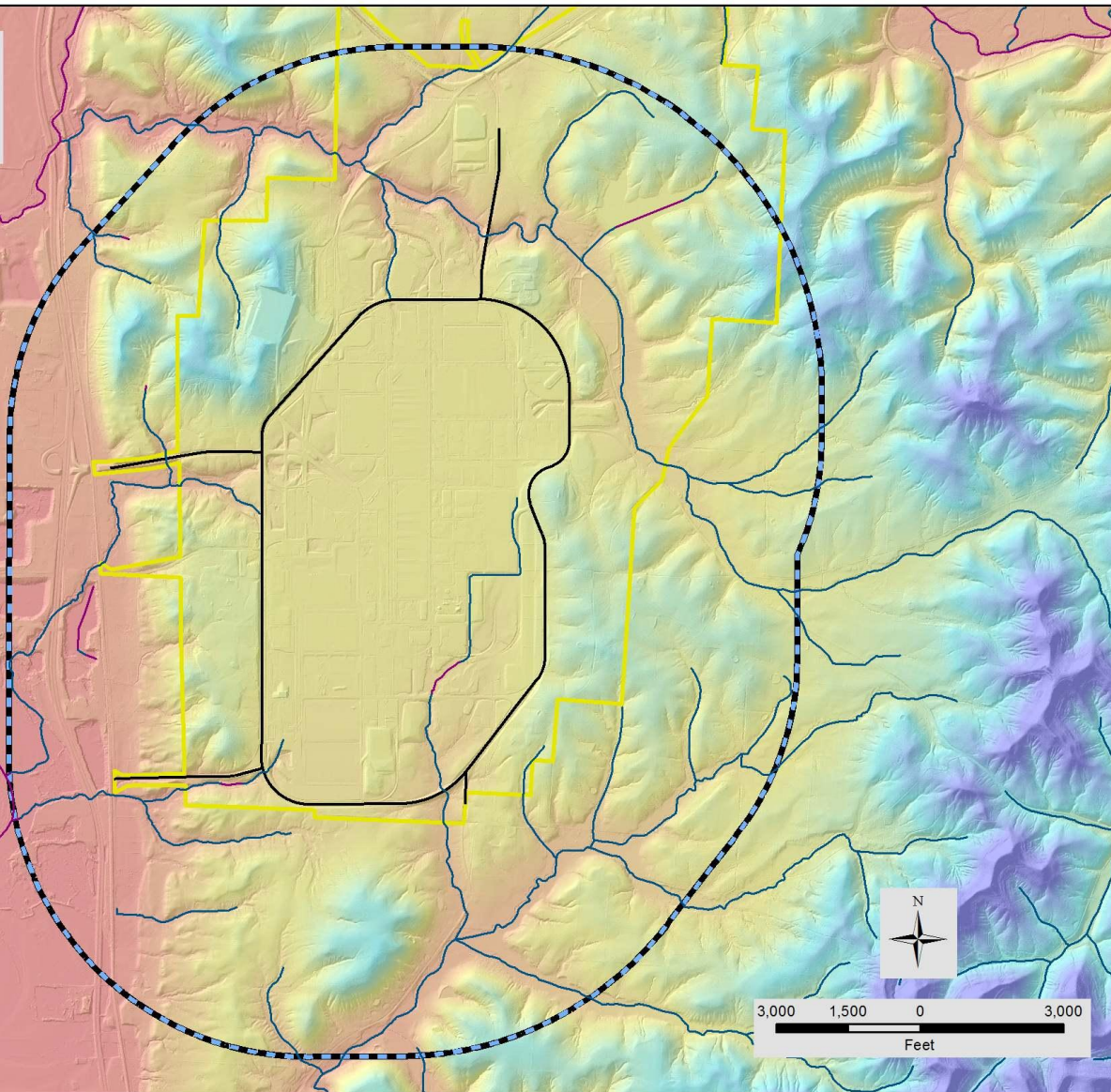




**PORTS
FUTURE**



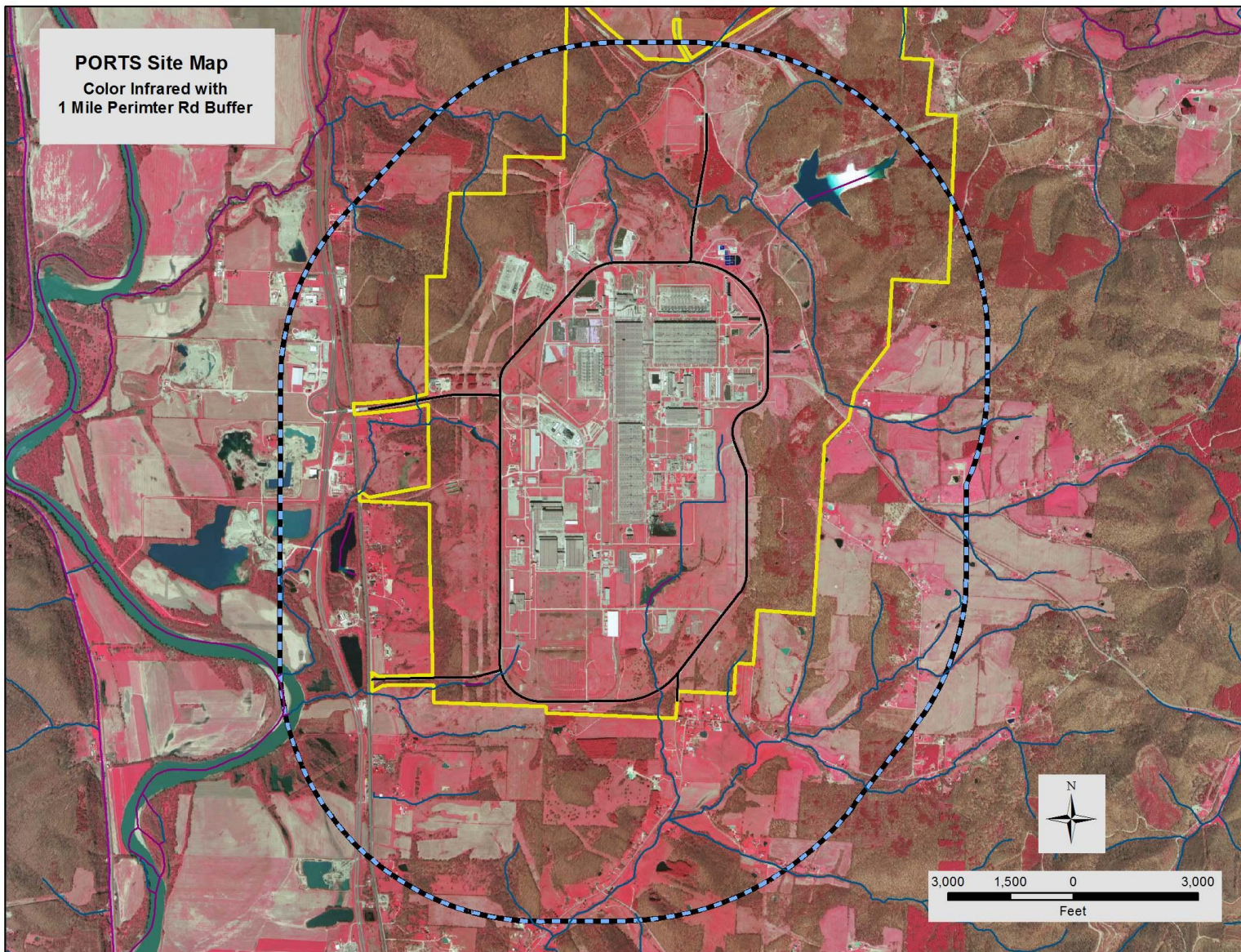
PORTS Site Map
Elevation with
1 Mile Perimeter Rd Buffer



**PORTS
FUTURE**



PORTS Site Map
Color Infrared with
1 Mile Perimeter Rd Buffer



**PORTS
FUTURE**



Deliverables

- Draft georeferenced database and landuse map available for review – August 1, 2012
- Final georeferenced database and landuse map complete – September 30, 2012
- Data Gap Report complete – September 30, 2012 (no DOE review of this one needed)
- Draft Wildlife Management Plan (including summary of public comment/involvement) available for review – September 30, 2012
- Final Wildlife Management Plan (including summary of public comment/involvement) complete – November 15, 2012